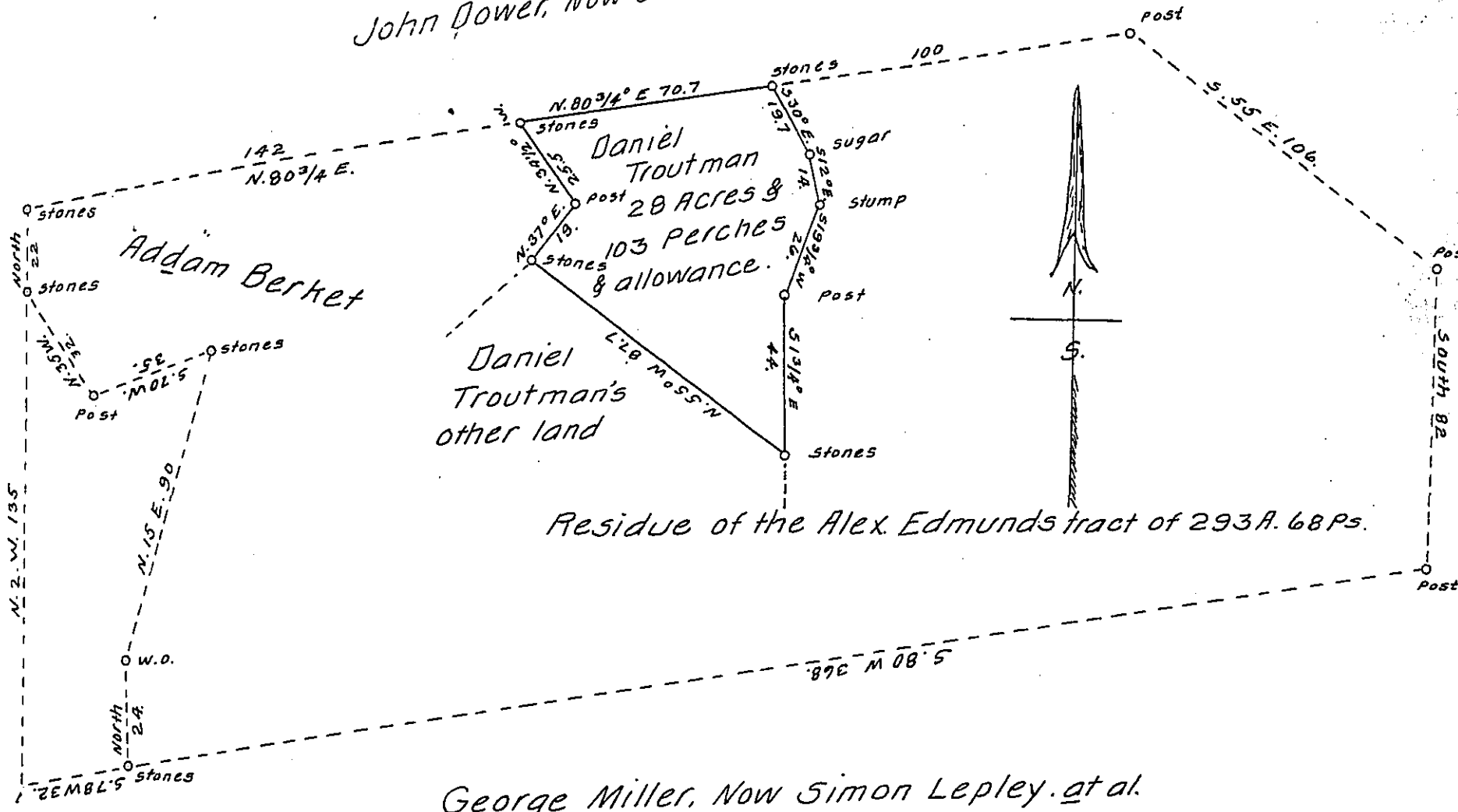


FORM NO 1.  
Scale .50 rods = one inch

John Dower, Now Jacob L. Kennel. et al



George Miller, Now Simon Lepley. et al

A Draft of a tract of land situated in the Township of Southampton and County of Somerset, containing 28 acres, 103 perches and allowance of six percent for roads, etc. Surveyed for Daniel Troutman the 8<sup>th</sup> day of October 1907, it being part of a larger tract containing 293 acres, 68 perches and allowance, originally surveyed, in pursuance of an Application of Alexander Edwards N<sup>o</sup> 2499 (West side), dated the 20<sup>th</sup> day of January 1767.

To Hon. Henry Houck,  
Secretary of Internal Affairs.

A. E. Rayman  
County Surveyor.

Note: When this form is used the County Surveyor should indicate by dotted lines the remainder of the original survey thus showing the location of the part returned. See paragraph nine of instructions to County Surveyors.

IN TESTIMONY that the above is a copy of the original remaining on file in the Department of Internal Affairs of Pennsylvania, made conformably to an Act of Assembly approved the 16th day of February, 1833, I have hereunto set my Hand and caused the Seal of said Department to be affixed at Harrisburg, this twentieth day of November 1907.

*Henry Houck*  
Secretary of Internal Affairs.